

# SANCREA

YACHTS



[sancreayachts.com](http://sancreayachts.com)



# SANGREA

## YACHTS BRAND VISION

By combining quality, comfort and beauty we redefining the luxury on the water to create memories which transforms to unforgettable experiences. Our yachts with sophisticated design create social areas where you and your family and friends can feel the sea at luxury level and spend quality time on board. We craft our yachts by merging modern and sporty lines with functionality to create winners in the market. Precise engineering, construction and seaworthiness are the foundations of our shipyard.



POWERFUL AND DETAILED DESIGN

SANCREA  
YACHTS



## UNFORGETTABLE EXPERIENCE.

Sancrea ALU 90 is a full aluminium motor yacht which invites you to experience moments of a harmony with nature and to feel the sea at a luxury level. With openable side balconies you get enormous beam and connection of the exterior and the interior. The yacht transforms into a villa on the sea with a lot of inviting social areas. As a largest yacht of the Sancrea ALU family, ALU 90 is designed with explorer soul in order to discover beautiful and untouched spots in nature.



DON'T JUST READ ABOUT IT EXPERIENCE IT

SANCREA  
YACHTS

# PANORAMIC AND INFINITY VIEWS TO THE SEA.



The iconic balcony in the aft deck with loose furniture from our sister company creates unforgettable moments with panoramic and infinity views to the sea.

**SANCREA**  
YACHTS



Adaptable living arrangements invites to socialize on board with maximum comfort.



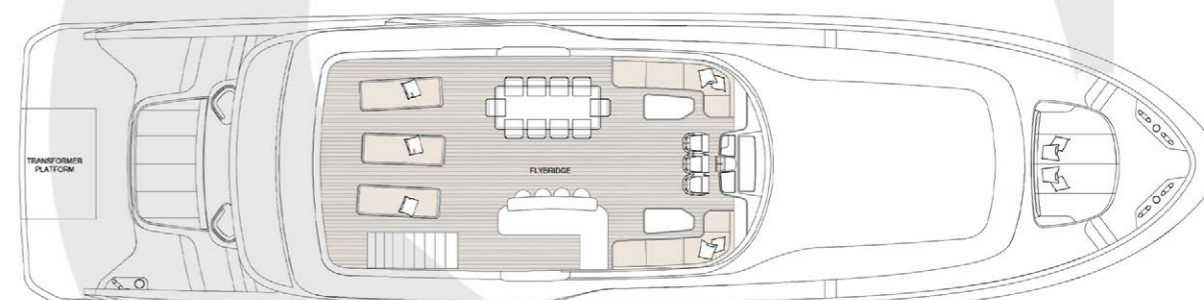
SANCREA  
YACHTS

# UNLIMITED POWER MEETS UNPRECEDENTED PRECISION

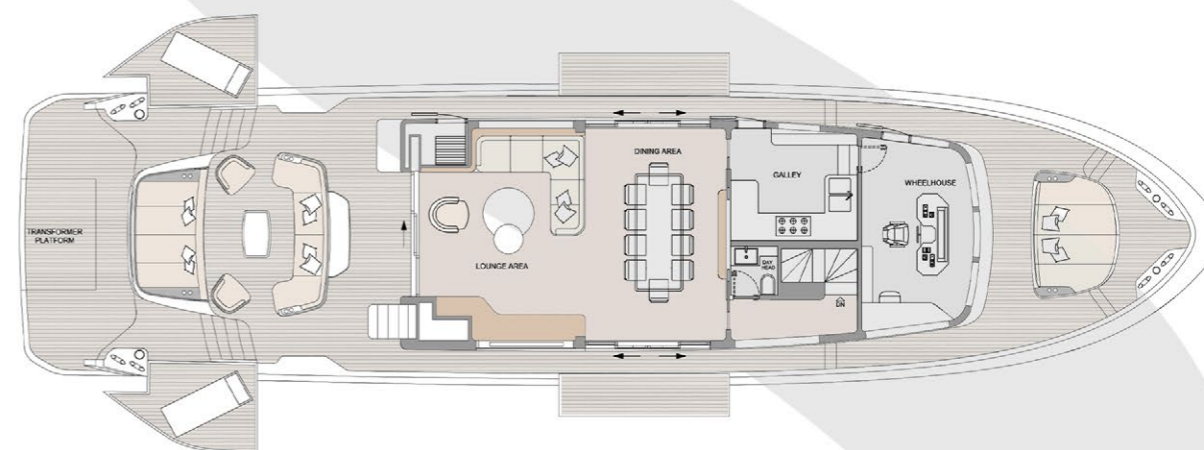


Length overall	27,80mt (91,20 ft)	Guests max	10
Hull length	26 mt (85,30 ft)	Cabins	7
Beam max	7 mt (22,96 ft)	Berths	14
Draft (incl. props)	1,4 mt (4,6ft)	Crew	4
Dry weight	80 tons	Hull	Sancrea Yachts
Fuel capacity	13000 lt	Design	Abbasli Design
Fresh water capacity	1500 lt	Classification	B + F + A1 RINA S.p.A.
Grey water capacity	800 lt	Engines	Volvo IPS D13 - 1050 x 3

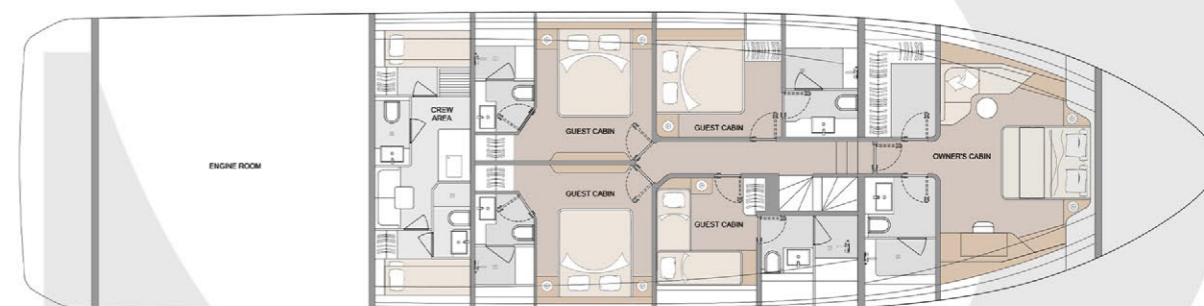
**SANCREA**  
YACHTS



FLYBRIDGE

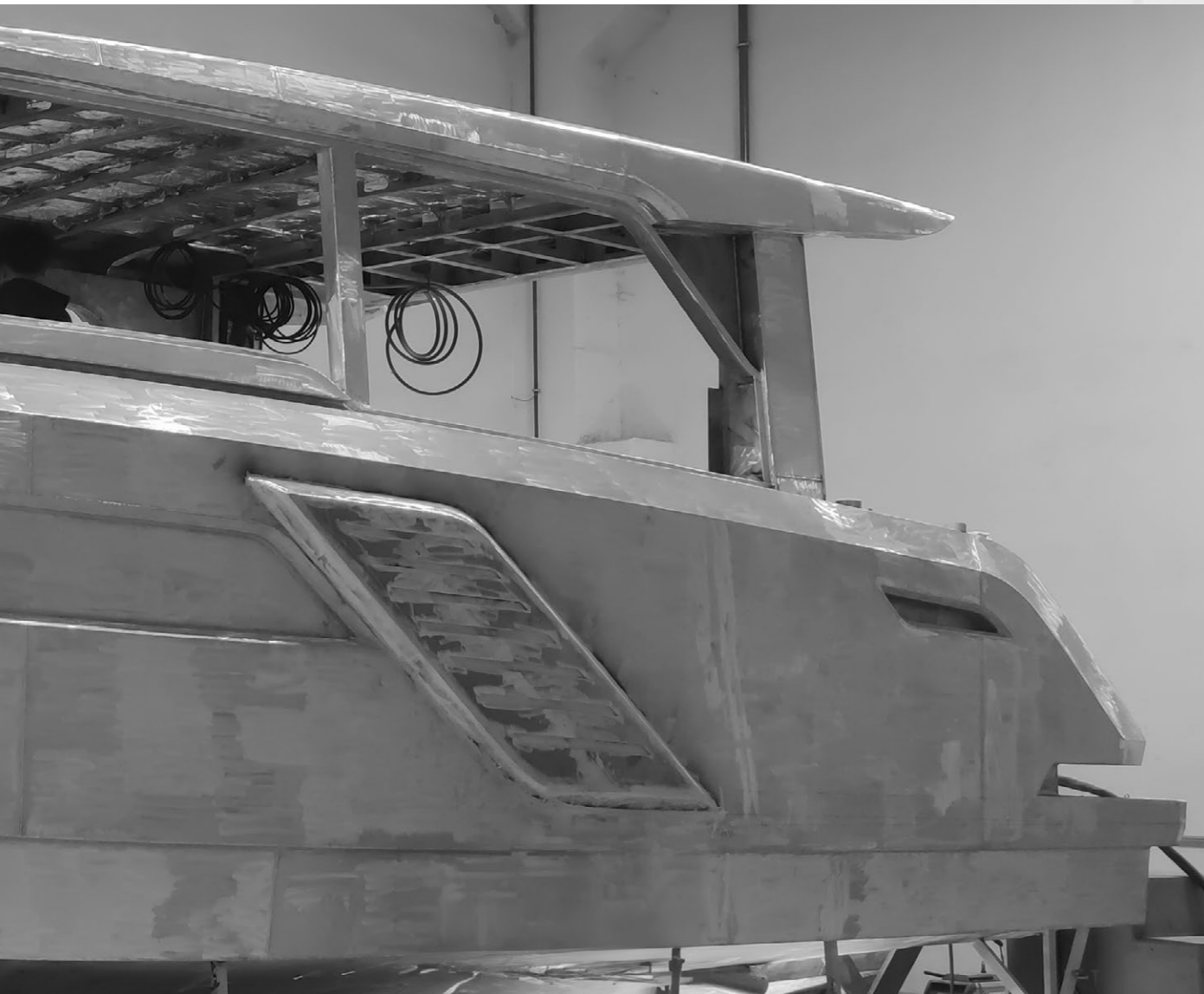


MAIN DECK



LOWER DECK

# WHERE OUR STORY BEGINS



**ALUMINIUM CONSTRUCTION** The aluminium construction provides a high degree of stiffness which makes our alu boats rigid with exceptional properties of strength and resistance. Our masters in the shipyard building aluminium boats by hand with precise engineering. In addition to that aluminium boats are very sustainable both for greener future and are remarkably resistant to corrosion, osmosis and structural fatigue.

**SANCREA**  
YACHTS

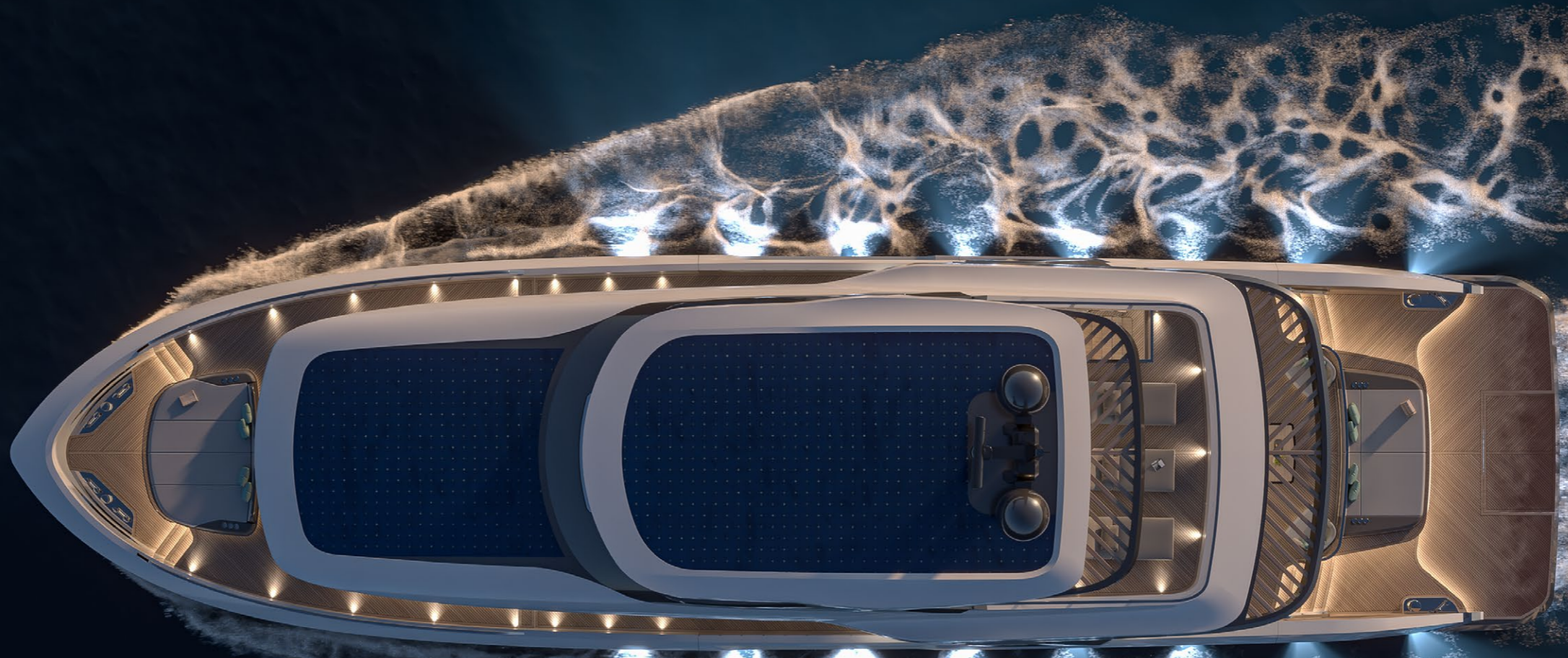
**SUSTAINABILITY** We build our boats in future-compatible and eco-conscious way. We are using environmentally friendly and fully recyclable material like aluminium for new upcoming projects. For eco cruising we are installing solar panels with smart energy management and new technologies.

**WOODWORK** Traditional wood work that done in the boat building process by our masters is the result of knowledge and experience that come from one generation to another generation starting from the first years of building Ottoman Empire's fleet.

**GRP CONSTRUCTION** We use vinylester resin in the construction of our composite yachts which offers the highest resistance to corrosion and heat, as well as to water penetration. It also has the best elongation properties among the marine resins.







# CONTACT

📍 Hamzabey, Osb Mah. 10.Cad No:5, 16400 İnegöl/Bursa

✉ [info@sancreayachts.com](mailto:info@sancreayachts.com)

🌐 [sancreayachts.com](http://sancreayachts.com)

**MUSTAFA AKSU**

**Regional Dealer - Middle East Sancrea Yachts  
& CEO Ocean Blue QFZ - Qatar**

☎ **Mob. +974 7711 2024 (WhatsApp)**

✉ [aksu@oceanblueqfz.com](mailto:aksu@oceanblueqfz.com)

# SANCREA

YACHTS

